

CIVIL ENGINEERING

ONE MARKS QUESTIONS

1. An axially loaded bar is subjected to a normal stress of 173 MPa. The shear stress in the bar is
 - a. 75 MPa
 - b. 86.5 MPa
 - c. 100 MPa
 - d. 122.3 MPa
2. A steel column, pinned at both ends, has a buckling load of 200 kN. If the column is restrained against lateral movement at its mid-height its buckling load will be
 - a. 200 kN
 - b. 283 kN
 - c. 400 kN
 - d. 800 kN
3. For an isotropic material, the relationship between the Young's modulus (E), shear modulus (G) and Poisson's ratio (μ) is given by
 - a. $G = \frac{E}{2(1+\mu)}$
 - b. $E = \frac{G}{2(1+\mu)}$
 - c. $G = \frac{E}{(1+2\mu)}$
 - d. $G = \frac{E}{2(1-\mu)}$
4. The stiffness coefficient k_{ij} indicates
 - a. force at i due to a unit deformation at j
 - b. deformation at j due to a unit force at i
 - c. deformation at i due to a unit force at j
 - d. force at j due to a unit deformation at i

A clay soil sample is tested in a triaxial apparatus in consolidated-drained conditions at a cell pressure of 100 kN/m^2 . What will be the pore water pressure at a deviator stress of 40 kN/m^2 ?

 - a. 0 kN/m^2
 - b. 20 kN/m^2
 - c. 40 kN/m^2
 - d. 60 kN/m^2
6. The number of blows observed in a Standard Penetration Test (SPT) for different penetration depths are given as follows:

Penetration of sampler	Number of blows
0 – 150mm	6
150 – 300mm	8
300 – 450mm	10

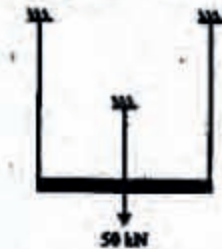
The observed N value is

 - a. 8
 - b. 14
 - c. 18
 - d. 24
7. The vertical stress at some depth below the corner of a $2 \text{ m} \times 3 \text{ m}$ rectangular footing due to a certain load intensity is 100 N/m^2 . What will be the vertical stress in N/m^2 below the centre of a $4 \text{ m} \times 6 \text{ m}$ rectangular footing at the same depth and same load intensity?
 - a. 25
 - b. 100
 - c. 200
 - d. 400
8. The presence of hardness in excess of permissible limit causes
 - a. cardio vascular problems
 - b. skin discolouration
 - c. calcium deficiency
 - d. increased laundry expenses
9. The dispersion of pollutants in atmosphere is maximum when
 - a. environmental lapse rate is greater than adiabatic lapse rate
 - b. environmental lapse rate is less than adiabatic lapse rate
 - c. environmental lapse rate is equal to adiabatic lapse rate
 - d. maximum mixing depth is equal to zero
10. The alkalinity and the hardness of a water sample are 250 mg/l and 350 mg/l as CaCO_3 , respectively. The water has
 - a. 350 mg/l carbonate hardness and zero non-carbonate hardness

- b. 250 mg/l carbonate hardness and zero non-carbonate hardness
 c. 250 mg/l carbonate hardness and 350 mg/l non-carbonate hardness
 d. 250 mg/l carbonate hardness and 100 mg/l non-carbonate hardness
11. The consumptive use of water for a crop during a particular stage of growth is 2.0 mm/day. The maximum depth of available water in the root zone is 60 mm. Irrigation is required when the amount of available water is 50% of the maximum available water in the root zone. Frequency of irrigation should be
 a. 10 days
 b. 15 days
 c. 20 days
 d. 25 days
12. As per the Lacey's method for design of alluvial channels, identify the TRUE statement from the following:
 a. Wetted perimeter increases with an increase in design discharge.
 b. Hydraulic radius increases with an increase in silt factor.
 c. Wetted perimeter decreases with an increase in design discharge.
 d. Wetted perimeter increases with an increase in silt factor.
13. The consistency and flow resistance of bitumen can be determined by which of the following?
 a. Ductility test
 b. Penetration test
 c. Softening point test
 d. Viscosity test
14. If a two-lane National Highway and a two-lane State Highway intersect at right angle, the number of potential conflict points at the intersection, assuming that both roads are two-way is
 a. 11
 b. 17
 c. 24
 d. 32
15. In signal design as per Indian Roads Congress specifications, if the sum of the ratios of normal flows to saturation flow of two directional traffic flow is 0.50 and the total lost time per cycle is 10 seconds, the optimum cycle length in seconds is
 a. 100
 b. 80
 c. 60
 d. 40
16. There is a fire overfall at the end of a long open channel. For a given flow rate, the critical depth is less than the normal depth. What gradually varied flow profile will occur in the channel for this flow rate?
 a. M_1
 b. M_2
 c. M_3
 d. S_1
17. At two points 1 and 2 in a pipeline the velocities are V and $2V$, respectively. Both the points are at the same elevation. The fluid density is ρ . The flow can be assumed to be incompressible, inviscid, steady and irrotational. The difference in pressures P_1 and P_2 at
 a. 0
 b. $\frac{1}{2} \rho V^2$
 c. ρV^2
 d. $3 \rho V^2$
18. The minimum and the maximum eigen values of the matrix are -2 and 6, respectively. What is the other eigen value?
 a. 5
 b. 3
 c. 1
 d. -1
19. The degree of the differential equation $\frac{d^2x}{dt^2} + 2x^3 = 0$ is
 a. 0
 b. 1
 c. 2
 d. 3
20. The solution for the differential equation $\frac{dy}{dx} = x^2y$ with the condition that $y = 1$ at $x = 0$ is
 a. $y = e^{\frac{x^3}{3}}$
 b. $\ln(y) = \frac{x^3}{3} + 4$
 c. $\ln(y) = \frac{x^3}{2}$
 d. $y = e^{\frac{x^3}{2}}$

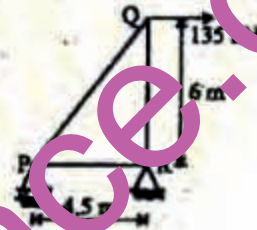
TWO MARKS QUESTIONS

21. A metal bar of length 100mm is inserted between two rigid supports and its temperature is increased by 10°C . If the coefficient of thermal expansion is 12×10^{-6} per $^{\circ}\text{C}$ and the Young's modulus is 2×10^5 MPa, the stress in the bar is
- zero
 - 12 MPa
 - 24 MPa
 - 2400 MPa
22. A rigid bar is suspended by three rods made of the same material as shown in the figure. The area and length of the central rod are $3A$ and L , respectively while that of the two outer rods are $2A$ and $2L$, respectively. If a downward force of 50 kN is applied to the rigid bar, the forces in the central and each of the outer rods will be



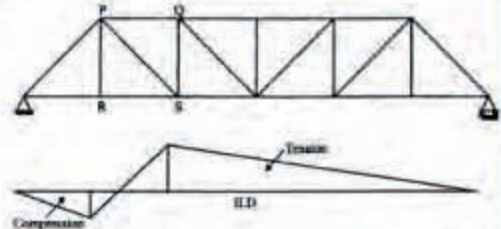
- 16.67 kN each
 - 30 kN and 15 kN
 - 30 kN and 10 kN
 - 21.4 kN and 14.3 kN
23. The maximum and minimum shear stresses in a hollow circular shaft of outer diameter 20mm and thickness 2 mm, subjected to a torque of 92.7 N-m will be
- 100 MPa and 47.2 MPa
 - 160 MPa and 80 MPa
 - 116 MPa and 160 MPa
 - 200 MPa and 160 MPa
- The shear stress at the neutral axis in a beam of triangular section with a base of 40 mm and height 20 mm, subjected to a shear force of 3 kN is
- 3 MPa
 - 6 MPa
 - 10 MPa
 - 20 MPa

25. U_1 and U_2 are the strain energies stored in a prismatic bar due to axial tensile forces P_1 and P_2 , respectively. The strain energy U stored in the same bar due to combined action of P_1 and P_2 will be
- $U = U_1 + U_2$
 - $U = U_1 U_2$
 - $U < U_1 + U_2$
 - $U > U_1 + U_2$
26. The right triangular truss is made of members having equal cross sectional area of 1550 mm^2 and Young's modulus of 2×10^5 MPa. The horizontal deflection of the joint Q is



- 2.47 mm
- 10.25 mm
- 14.31 mm
- 15.68 mm

27. The influence line diagram (ILD) shown is for the member



- PS
- RS
- PQ
- QS

Data for Q.28 & Q.29 are given below. Solve the problems and choose the correct answers.

A two span continuous beam having equal spans each of length L is subjected to a uniformly distributed load w per unit length. The beam has constant flexural rigidity.

28. The reaction at the middle support is
- wL
 - $\frac{5wL}{2}$

c. $\frac{5wL}{4}$

d. $\frac{5wL}{8}$

29. The bending moment at the middle support is

a. $\frac{wL^2}{4}$

b. $\frac{wL^2}{8}$

c. $\frac{wL^2}{12}$

d. $\frac{wL^2}{16}$

30. Consider the following statements:

1. The compressive strength of concrete decreases with increase in water-cement ratio of the concrete mix.

2. Water is added to the concrete mix for hydration of cement and workability.

3. Creep and shrinkage of concrete are independent of the water-cement ratio in the concrete mix.

The TRUE statements are

a. 1 and 2

b. 1, 2 and 3

c. 2 and 3

d. only 2

31. The percentage loss of prestress due to anchorage slip of 3mm in a concrete beam of length 30m which is prestressed by a tendon with an initial stress of 1200N/mm^2 and modulus of elasticity equal to $2.1 \times 10^5\text{N/mm}^2$ is

a. 0.0175

b. 0.175

c. 1.75

d. 17.5

32. A concrete beam of rectangular cross-section of size 120mm (width) and 200mm (depth) is prestressed by a straight tendon to an effective force of 150 kN at an eccentricity of 20mm (below the centroidal axis in the depth direction). The stresses at the top and bottom fibres of the section are

a. 2.5N/mm^2 (compression), 10N/mm^2 (compression)

b. 10N/mm^2 (tension), 2.5N/mm^2 (compression)

c. 3.75N/mm^2 (tension), 3.75N/mm^2 (compression)

d. 2.75N/mm^2 (compression), 3.75N/mm^2 (compression)

33. Consider the following statements:

1. Modulus of elasticity of concrete increases with increase in compressive strength of concrete.

2. Brittleness of concrete increases with decrease in compressive strength of concrete.

3. Shear strength of concrete increases with increase in compressive strength of concrete.

The TRUE statements are

a. 2 and 3

b. 1, 2 and 3

c. 1 and 3

d. 1 and 2

Data for Q.32 & Q.35 are given below. Solve the problem and choose correct answers.

A singly reinforced rectangular concrete beam has a width of 150mm and an effective depth of 250mm. The characteristic compressive strength of concrete is 20MPa and the characteristic tensile strength of steel is 415MPa. Adopt the stress block for concrete as given in IS:456-2000 and take limiting value of depth of neutral axis as 0.48 times the effective depth of the beam.

34. The limiting value of the moment of resistance of the beam in kN-m is

a. 0.14

b. 0.45

c. 45.08

d. 156.82

35. The limiting area of tension steel in mm^2 is

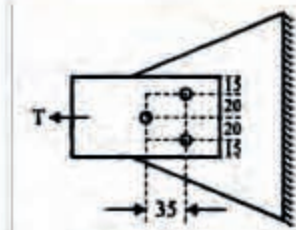
a. 473.9

b. 412.3

c. 373.9

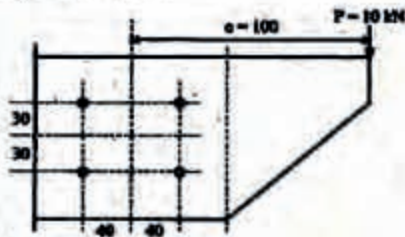
d. 312.3

36. A steel flat of rectangular section of size $70 \times 6\text{mm}$ is connected to a gusset plate by three bolts each having a shear capacity of 15 kN in holes having diameter 11.5 mm. If the allowable tensile stress in the flat is 150 MPa, the maximum tension that can be applied to the flat is



- a. 42.3 kN
b. 52.65 kN
c. 59.5 kN
d. 63.0 kN

37. A bracket connection is made with four bolts of 10 mm diameter and supports a load of 10 kN at an eccentricity of 100 mm. The maximum force to be resisted by any bolt will be



(all distance are in mm)

- a. 5 kN
b. 6.5 kN
c. 6.8 kN
d. 7.16 kN

38. The plastic collapse load W for the propped cantilever supporting two point loads as shown in figure in terms of plastic moment capacity, M_p is given by



- a. $\frac{3M_p}{L}$
b. $\frac{4M_p}{L}$
c. $\frac{5M_p}{L}$
d. $\frac{6M_p}{L}$

39. Sieve analysis on a dry soil sample of mass 1000 g showed that 980 g and 270 g of soil pass through 4.75 mm and 0.075 mm sieve, respectively. The liquid limit and plastic limits of the soil fraction

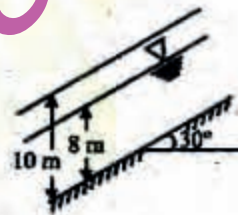
passing through 425 μ sieves are 40% and 18%, respectively. The soil may be classified as

- a. SC
b. MI
c. CI
d. SM

40. The water content of a saturated soil and the specific gravity of soil solids were found to be 30% and 2.70, respectively. Assuming the unit weight of water to be 10 kN/m³, the saturated unit weight (kN/m³) and the void ratio of the soil are

- a. 19.4, 0.81
b. 18.5, 0.30
c. 19.4, 0.45
d. 18.5, 0.75

41. The factor of safety of an infinite soil slope shown in the figure having the properties $c = 0$, $\phi = 35^\circ$, $\gamma_{dry} = 16$ kN/m³ and $\gamma_{sat} = 20$ kN/m³ is approximately equal to



- a. 0.70
b. 0.80
c. 1.00
d. 1.20

42. Match List-I with List-II and select the correct answer using the codes given below the lists:

List-I

- P. Constant head permeability test
Q. Consolidation test
R. Pycnometer test
S. Negative skin friction

List-II

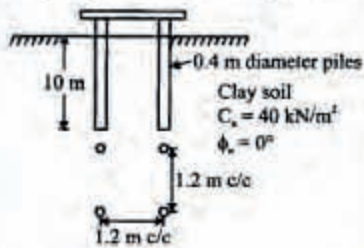
1. Pile foundation
2. Specific gravity
3. Clay soil
4. Sand

Codes:

- | | P | Q | R | S |
|----|---|---|---|---|
| a. | 4 | 3 | 2 | 1 |
| b. | 4 | 2 | 3 | 1 |

- c. 3 4 2 1
d. 4 1 2 3

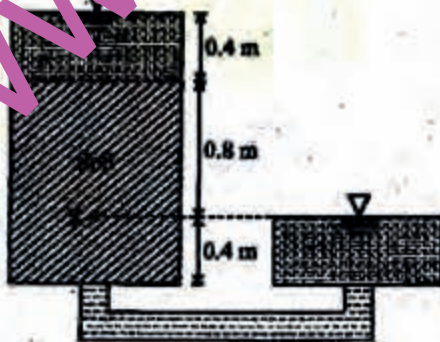
43. The bearing capacity of a rectangular footing of plan dimensions $1.5\text{m} \times 3\text{m}$ resting on the surface of a sand deposit was estimated as 600kN/m^2 when the water table is far below the base of the footing. The bearing capacities in kN/m^2 when the water level rises to depths of 3m, 1.5m and 0.5m below the base of the footing are
- a. 600, 600, 400
b. 600, 450, 350
c. 600, 500, 250
d. 600, 400, 250
44. What is the ultimate capacity in kN of the pile group shown in the figure assuming the group to fail as a single block?



- a. 921.6
b. 1177.6
c. 2438.6
d. 3481.6

Data for Q. 45 & Q.46 are given below. Solve the problems and choose the correct answers.

Water is flowing through a permeability apparatus as shown in the figure. The coefficient of permeability of the soil is 'k' m/s and the porosity of the soil sample is 0.50.

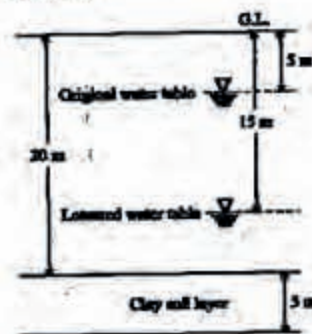


45. The total head, elevation head and pressure head in metres of water at the point R shown in the figure are
- a. 0.8, 0.4, 0.4
b. 1.2, 0.4, 0.8
c. 0.4, 0, 0.4
d. 1.6, 0.4, 1.2
46. What are the discharge velocity and seepage velocity through the soil sample?
- a. k , $2k$
b. $\frac{2}{3}k$, $\frac{4}{3}k$
c. $2k$, k
d. $\frac{4}{3}k$, $\frac{2}{3}k$

Data for Q. 47 & Q.48 are given below. Solve the problems and choose the correct answers.

The ground conditions at a site are as shown in the figure. The water table at the site which was initially at a depth of 5m below the ground level gradually lowered to a depth of 15m below the ground level due to pumping of water over a few years. Assume the following data:

- (i) unit weight of water = 10 kN/m^3
(ii) unit weight of sand above water table = 18 kN/m^3
(iii) unit weight of sand and clay below the water table = 20 kN/m^3
(iv) coefficient of volume compressibility = $0.25\text{ m}^2/\text{MN}$



47. What is the change in the effective stress in kN/m^2 at mid-depth of the clay layer due to the lowering of the water table?
- a. 0
b. 20
c. 80
d. 100

48. What is the compression of the clay layer in mm due to the lowering of the water table?
- 125
 - 100
 - 25
 - 0
49. Two electrostatic precipitators (ESPs) are in series. The fractional efficiencies of the upstream and downstream ESPs for size are 80% and 65%, respectively. What is the overall efficiency of the system for the same
- 100%
 - 93%
 - 80%
 - 65%
50. 50g of CO₂ and 25 g of CH₄ are produced from the decomposition of municipal solid waste (MSW) with a formula weight of 120g. What is the average per capita greenhouse gas production in a city of 1 million people with a MSW production rate of 500 ton/day?
- 104g/day
 - 120g/day
 - 208g/day
 - 313g/day

Data for Q.51 & Q.52 are given below. Solve the problems and choose correct answers.

A completely mixed activated sludge process is used to treat a wastewater flow of 1 million liters per day (1 MLD) having a BOD₅ of 200mg/l. The biomass concentration in the aeration tank is 2000mg/l and the concentration of the net biomass leaving the system is 500g/l. The aeration tank has a volume of 200m³.

51. What is the hydraulic retention time of the wastewater in aeration tank?
- 0.2h
 - 4.8h
 - 10h
 - 24h
52. What is the average time for which the biomass stays in the system?
- 5 h
 - 8 h
 - 2 days
 - 8 days

Data for Q. 53 & 54 are given below. Solve the problems and choose correct answers.

A plain sedimentation tank with a length of 20m, width of 10m, and a depth of 3m is used in a water treatment plant to treat 4 million liters of water per day (4 MLD). The average temperature of water is 20°C. The dynamic viscosity of water is $1.002 \times 10^{-3} \text{ N.s/Wm}^2$ at 20°C. Density of water is 998.2kg/m³. Average specific gravity of particles is 2.65.

53. What is the surface overflow rate in the sedimentation tank?
- 20 m³/m²/day
 - 40m³/m²/day
 - 67m³/m²/day
 - 133m³/m²/day
54. What is the minimum diameter of the particle which can be removed with 100% efficiency in the above sedimentation tank?
- 1.8×10^{-3} mm
 - 6.0×10^{-3} mm
 - 50×10^{-3} mm
 - 160×10^{-3} mm
55. The culturable command area for a distributed channel is 20,000 hectares. Wheat is grown in the entire area and the intensity of irrigation is 50%. The kor period for wheat is 30 days and the kor water depth is 120mm. The outlet discharge for the distributary should be
- 2.85 m³/s
 - 3.21 m³/s
 - 4.63 m³/s
 - 5.23 m³/s
56. An isolated 4-hour storm occurred over a catchment as follows:
- | Time | 1 st hr | 2 nd hr | 3 rd hr | 4 th hr |
|--------------|--------------------|--------------------|--------------------|--------------------|
| Rainfall(mm) | 9 | 28 | 12 | 7 |
- The ϕ index for the catchment is 10 mm/h. The estimated runoff depth from the catchment due to the above storm is
- 10 mm
 - 16 mm
 - 20 mm
 - 23 mm

Data for Q.57 & Q.58 are given below. Solve the problems and choose correct answers.

Ordinates of a 1-hour unit hydrograph at 1 hour intervals, starting from time $t = 0$ are 0, 2, 6, 4, 2, 1 and $0 \text{ m}^3/\text{s}$.

57. Catchment area represented by this unit hydrograph is

- 1.0 km^2
- 2.0 km^2
- 3.2 km^2
- 5.4 km^2

58. Ordinate of a 3-hour unit hydrograph for the catchment at $t = 3$ hours is

- $2.0 \text{ m}^3/\text{s}$
- $3.0 \text{ m}^3/\text{s}$
- $4.0 \text{ m}^3/\text{s}$
- $5.0 \text{ m}^3/\text{s}$

59. The extra widening required for a two-lane National Highway at a horizontal curve of 300m radius, considering a wheel base of 8 m and a design speed of 100kmph is

- 0.42 m
- 0.62m
- 0.82 m
- 0.92m

60. While designing a hill road with a ruling gradient of 6%, if a sharp horizontal curve of 50m radius is encountered, the compensated gradient at the curve as per the Indian Roads Congress specification should be

- 4.4%
- 4.75%
- 5.0%
- 5.25%

61. The design speed on a road is 60kmph. Assuming the driver reaction time of 2.5 seconds and coefficient of friction of pavement surface as 0.35, the required stopping distance for two-way traffic on a single lane road is

- 82.1 m
- 102.4 m
- 164.2 m
- 186.4 m

62. The width of the expansion joint is 20mm in a cement concrete pavement. The laying temperature is 20°C and the maximum slab temperature in summer is 60°C . The coefficient of thermal expansion of concrete is $10 \times 10^{-6} \text{ mm/mm}^\circ\text{C}$ and the joints filler compresses up to 50% of the

thickness. The spacing between expansion joints should be

- 20m
- 25m
- 30m
- 40m

63. The following data pertains to the number of commercial vehicles per day for the design of a flexible pavement for a national highway as per IRC:37-1984

Type of commercial vehicle	Number of vehicles per day considering the number of lanes	Vehicle Damage Factor
Two axle trucks	2000	5
Tandem axle trucks	700	6

Assuming traffic growth factor of 7.5% per annum for both the types of vehicles, the cumulative number of standard axle load repetitions (in million) for a design life of ten years is

- 44.6
- 57.8
- 62.4
- 78.7

64. Match the following tests on aggregate and its properties.

Test

P. Crushing test

Q. Los Angeles abrasion test

R. Soundness test

S. Angularity test

Property

1. Hardness

2. Weathering

3. Shape

4. Strength

Codes :

	P	Q	R	S
a.	2	1	4	3
b.	4	2	3	1
c.	3	2	1	4
d.	4	1	2	3

65. The plan of a map was photo copied to a reduced size such that a line originally 100mm, measures 90mm. The original scale of the plan was 1 : 1000. The revised scale is

- 1 : 900

- b. 1 : 1111
 c. 1 : 1121
 d. 1 : 1221

66. The following table gives data of consecutive coordinates in respect of a closed the odolite traverse PQRSP.

Station	Northing m	Southing m	Easting m	Westing m
P	400.75			300.5
Q	100.25		199.25	
R		199.0	399.75	
S		300.0		200.5

The magnitude and direction of error of closure in whole circle bearing are

- a. 2.0 m and 45°
 b. 2.0 m and 315°
 c. 2.82 m and 315°
 d. 3.42 m and 45°
67. The following measurements were made during testing a levelling instrument

Instrument at	Staff reading at	
	P ₁	Q ₁
P	2.800 m	1.700 m
Q	2.700 m	1.800 m

P₁ is close to P and Q₁ is close to Q. If the reduced level of station P is 100.000m, the reduced level of station Q is

- a. 99.000 m
 b. 100.000 m
 c. 101.000 m
 d. 102.000 m
68. Two straight lines intersect at an angle of 60° . The radius of a curve joining the two straight lines is 600 m. The length of long chord and mid-ordinates in metres of the curve are
- a. 80.4, 300.0
 b. 600.0, 80.4
 c. 600.0, 39.89
 d. 39.89, 300.0

69. The magnetic bearing of a line AB is S 45° E and the declination is 5° West. The true bearing of the line AB is
- a. S 45° E
 b. S 40° E
 c. S 50° E
 d. S 50° W

70. A horizontal water jet with a velocity of 10m/s and cross sectional area of 10mm^2 strikes a flat plate held normal to the flow direction. The density of water is

1000kg/m^3 . The total force on the plate due to the jet is

- a. 100 N
 b. 10 N
 c. 1 N
 d. 0.1 N

71. A 1 : 50 scale model of a spillway is to be tested in the laboratory. The discharge in the prototype is $1\,000\text{m}^3/\text{s}$. The discharge to be maintained in the model test is

- a. $0.057\text{m}^3/\text{s}$
 b. $0.08\text{m}^3/\text{s}$
 c. $0.57\text{m}^3/\text{s}$
 d. $5.7\text{m}^3/\text{s}$

72. A triangular open channel has a vertex angle of 90° and carries flow at a critical depth of 0.50m. The discharge in the channel is

- a. $0.08\text{m}^3/\text{s}$
 b. $0.11\text{m}^3/\text{s}$
 c. $0.15\text{m}^3/\text{s}$
 d. $0.2\text{m}^3/\text{s}$

The flow rate of a fluid (density = 100kg/m^3) in a small diameter tube is $800\text{mm}^3/\text{s}$. The length and the diameter of the tube are 2m and 0.5mm, respectively. The pressure drop in 2m length is equal to 2.0 MPa. The viscosity of the fluid is

- a. 0.025N.s/m^2
 b. 0.012N.s/m^2
 c. 0.00192N.s/m^2
 d. 0.00102N.s/m^2

74. The flow rate in a wide rectangular open channel is $2.0\text{m}^3/\text{s}$ per metre width. The channel bed slope is 0.002. The Manning's roughness coefficient is 0.012. The slope of the channel is classified as

- a. Critical
 b. Horizontal
 c. Mild
 d. Steep

Data for Q.75 and Q.76 are given below. Solve the problems and choose correct answers.

A rectangular open channel needs to be designed to carry a flow of $2.0\text{m}^3/\text{s}$ under uniform flow conditions. The Manning's roughness coefficient is 0.018. The channel should be such that the flow depth is equal to half the width, and the Froude number is equal to 0.5.

75. The bed slope of the channel to be provided is
- 0.0012
 - 0.0021
 - 0.0025
 - 0.0052

76. Keeping the width, flow depth and roughness the same, if the bed slope of the above channel is doubled, the average boundary shear stress under uniform flow conditions is
- 5.6 N/m^2
 - 10.8 N/m^2
 - 12.3 N/m^2
 - 17.2 N/m^2

77. For what values of α and β the following simultaneous equations have an infinite number of solutions?

$$x+y+z=5; x+3y+3z=9; x+2y+\alpha z=\beta$$

- 2, 7
 - 3, 8
 - 8, 3
 - 7, 2
78. A velocity vector is given as $\vec{V} = 5xz\vec{i} + 2y^2\vec{j} + 3yz^2\vec{k}$. The divergence of this velocity vector at (1, 1, 1) is
- 9
 - 10
 - 14
 - 15

79. A body original at 60°C cools down to 40°C in 15 minutes when kept in air at a temperature of 25°C . What will be the temperature of the body at the end of 30 minutes?
- 35.2°C
 - 31.5°C
 - 28.7°C
 - 15°C

80. The following equation needs to be numerically solved using the Newton-Raphson method.

$$x^3 + 4x - 9 = 0$$

The iterative equation for this purpose is (k indicates the iteration level)

- $x_{k+1} = \frac{2x_k^3 + 9}{3x_k^2 + 4}$
- $x_{k+1} = \frac{3x_k^2 + 4}{2x_k^3 + 9}$

$$c. x_{k+1} = x_k - 3x_k^2 + 4$$

$$d. x_{k+1} = \frac{4x_k^3 + 3}{9x_k^2 + 2}$$

81. Evaluate $\int_0^{\pi} \frac{\sin t}{t} dt$

- π
- $\pi/2$
- $\pi/4$
- $\pi/8$

82. Potential function ϕ is given as $\phi = x^2 - y^2$. What will be the stream function (Ψ) with the condition $\Psi = 0$ at $x = y = 0$.

- $2xy$
- $x^2 + y^2$
- $x^2 - y^2$
- $2x^2 - y^2$

83. The inverse of the 2×2 matrix $\begin{bmatrix} 1 & 2 \\ 5 & 7 \end{bmatrix}$ is,

$$a. \frac{1}{3} \begin{bmatrix} -7 & 2 \\ 5 & -1 \end{bmatrix}$$

$$b. \frac{1}{3} \begin{bmatrix} 7 & 2 \\ 5 & 1 \end{bmatrix}$$

$$c. \frac{1}{3} \begin{bmatrix} 7 & -2 \\ -5 & 1 \end{bmatrix}$$

$$d. \frac{1}{3} \begin{bmatrix} -7 & -2 \\ -5 & -1 \end{bmatrix}$$

84. Given that one root of the equation $x^3 - 10x^2 + 31x - 30 = 0$ is 5, the other two roots are

- 2 and 3
- 2 and 4
- 3 and 4
- 2 and -3

85. If the standard deviation of the spot speed of vehicles in a highway is 8.8 kmph and the mean speed of the vehicles is 33 kmph, the coefficient of variation in speed is

- 0.1517
- 0.1867
- 0.2666
- 0.3646